

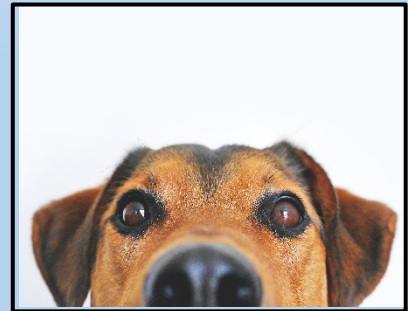
Questionnaire on Animal-Assisted Interventions

We are looking for **participants** to take part in a study on **how AAI is used** in educational settings.

Make a difference in AAI practices worldwide

Please fill in our questionnaire

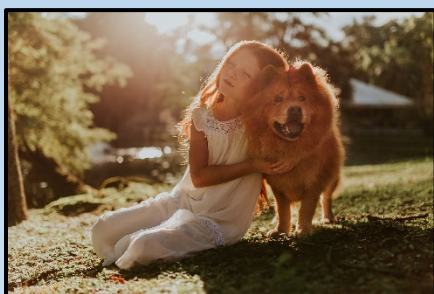
- If **your child/children take part in** any forms of **AAI**
- If **you use AAI** in your work



We would like to contribute to **improve AAI** for children with Autism and/or Special Educational Needs



It takes only **20 mins** to complete
Questionnaire link:
<https://goo.gl/vv1NWA>



The questionnaire focuses on

- The practicality of AAI
- **Benefits & shortcomings of AAI**

Thank you very much for your help!

If you have any questions about the study please **contact us**:

Greta Kerulo (PhD student) gkerulo@lincoln.ac.uk;

Dr Niko Kargas (Supervisor) nkargas@lincoln.ac.uk; Prof Daniel Mills (Supervisor) dmills@lincoln.ac.uk