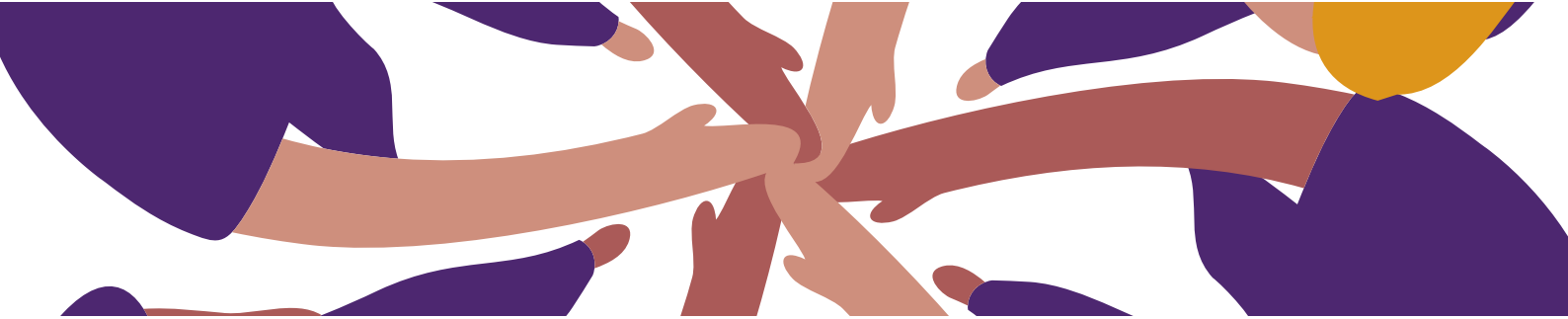


# one stop shop

Scottish  
autism  
WHERE AUTISTIC PEOPLE  
ARE VALUED



## Where to find us at Cupar Social Drop In



We hope that this document will give you insight of where to find us at the YMCA YWCA Cupar for our Cupar Social Drop-In. These take place on the third Monday of each month and are open to autistic people, families, carers & professionals.

You can reach out to our team before these sessions via the details below;

**Phone: 01592 645350**

**Phone Line Opening Hours: Monday to Friday, 9.30am - 5pm**

**Email: [fifeoss@scottishautism.org](mailto:fifeoss@scottishautism.org)**

**Address: New Volunteer House, 16 East Fergus Place, Kirkcaldy, KY1 1XT**

Cupar Social Drop-In is located at Cupar YMCA-YWCA, Marathon House, 93 Bonnygate, Cupar, KY15 4LG.



Above is a street view of the Cupar YMCA-YWCA

During Cupar Social Drop-In, you will find us usually seated in the area shown in the image below. This area is situated through the entrance door and to the left. Please note that we encourage you to sit or move around in a way you feel more comfortable. A space for one-to-one conversations is available if needed.

